

365549 - Empower Rural Iowa Emergency Broadband Expansion Program (NOFA#003)

367228 - Infrastructure Broadband Grant for Manly, Ledyard, and Northwood Areas

Winnebago Cooperative Telecom Association

[Notice of Funding Availability #003](#) (Section 2.2.6.1.1.3.) requires Applicants to certify “that each of the unserved Broadband Units in the form of Homes, Businesses, and Schools located within Census Blocks forming the basis of the Project that will be Facilitated with 25/3 Broadband or 100/20 Broadband, as applicable, as a result of the Project DO NOT currently have 25/3 Broadband service available, meaning no other known Communications Services Provider currently Facilitates 25/3 Broadband or greater to the Broadband Unit.”

Accordingly, your Application identified the total number of broadband units (homes, schools, and businesses) to which new service will be available in Exhibit B (See “*Total Units*” column identified under *Total Number of HSB’s (i.e. Broadband Units) New Service Will Be Available To* as highlighted in yellow in the table below). As part of your Application you also certified that all broadband units that will be Facilitated with 25/3 Broadband or 100/20 Broadband, as applicable, as a result of your Project DO NOT currently have 25/3 Broadband service available, meaning no other known Communications Services Provider currently Facilitates 25/3 Broadband or greater to the Broadband Unit.

Project Area				Total Number of HSB's (i.e., Broadband Units) in Project Area				Total Number of HSB's (i.e., Broadband Units) New Service Will Be Available To			
Census Block #	TSA Status	County	Sq. Miles	H	S	B	Total Units	H	S	B	Total Units
##	Yes: ## No: ##	##	##	##	##	##	##	##	##	##	##

As part of its evaluation of Applications, the Office is issuing this request for clarification to confirm one of the following pieces of information: (PLEASE CHOOSE ONE)

1. PLEASE CONFIRM that ALL broadband units identified in Exhibit B of your Core Application as broadband units to which “New Service Will Be Available To” are not currently served by 25/3 Broadband service currently, meaning that no other known Communication Service Provider currently facilitates 25/3 Broadband or faster service to those broadband units

OR

2. PLEASE CONFIRM the number of broadband units in your project area that ARE UNSERVED by 25/3 Broadband service, meaning that no other known Communication Service Provider currently facilitates 25/3 Broadband or faster service to those broadband units

You are asked to confirm this information by responding to this e-mail and identifying the total number of broadband units in your project that ARE CURRENTLY UNSERVED by 25/3 Broadband Service, meaning that no other known Communication Service Provider currently Facilitates 25/3 Broadband or faster service by responding to this e-mail and identifying the total number of broadband units that meet this criteria.

Winnebago Cooperative Telecom Association Response to OCIO Request:

To the best of our knowledge **the number of broadband units in our project area that ARE UNSERVED by 25/3 Broadband service is 260, meaning that no other known Communication Service Provider currently facilitates 25/3 Broadband or faster service to those broadband units is:**

To support this claim, we provide the following support information:

1. Utilizing the Broadband Availability Map data provided within the OCIO NOFA#003 application website the company identified TSA Yes and TSA No census blocks. The auto populated until locations from the Exhibit B resulted in a TSA yes count of 178 and TSA no count of 646. Based on our research below we were unable to identify 82 TSA no units that have a service provider capable of 25/3meg service. See additional information below.
2. Utilizing the June 2019 Public FCC 477 Report the company confirmed census blocks that current service providers within the application area are identified as providing service at the minimum service standard of 25/3. Winnebago was only able to identify 62 of the 95 census blocks as being serviced by known communications service provider which include Router12 Networks, LLC, OmniTel Communications, Inc., and Mediacom Iowa, LLC.
3. Utilizing the June 2019 Public FCC 477 Report service provider list, Winnebago staff researched the applicable websites of service providers that included Century Link, Starcom Communications (Wild Blue), LTD Broadband, and Windstream.
 1. The staff at Winnebago populated addresses in the CenturyLink, Inc. website for each of the applicant census blocks, consistently these addresses resulted in a message as not having high speed internet availability. Those areas where Century Link identifies availability, there current download speed is capped at 2meg.
 2. The website of Starcom Communications Wild Blue Division currently has their highest internet broadband speed utilizing their fixed wireless technology as being 20/1.5meg.
 3. LTD Broadband, another fixed wireless provider reported on their FCC 477 having the highest internet speed as 10/2meg. Conversations with area customers have claimed both lack of availability in their area or very intermittent reliable speeds.
 4. Windstream's currently copper network is limited to internet speeds below 25/3 meg as confirmed on both the FCC 477 and service availability on their website.
4. It is important to note that the ratio and count of TSA Yes and TSA No locations does not correlate equally on a cost per location basis to construct the applicants network. The majority of the TSA No unit locations are within the city limits of communities that have a much higher density level and therefore a lower cost to serve. Specifically, the entire budgeted expenditures in Exhibit D for Conduit, Fiber/Copper, and Boring would be required if TSA a portion of unit locations were not funded by this grant.



(<https://router12.net/>)

–High Speed Broadband



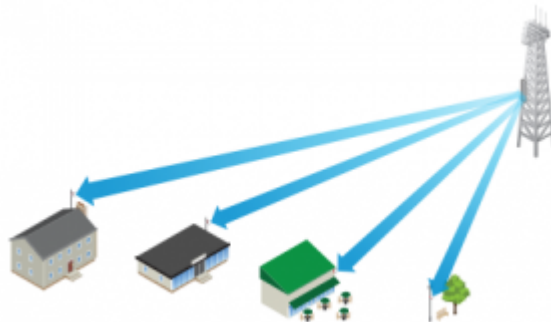
HIGH SPEED BROADBAND

HOME ([HTTPS://ROUTER12.NET](https://router12.net/)) | HIGH SPEED BROADBAND

Everyone deserves reliable and affordable high-speed Internet. Just think about how much you use it every day – the Internet is not a luxury anymore, it's a necessity. We're working hard to bring a better choice of high-speed Internet to those of you who don't feel you have a lot of choices.

The future can't wait for the phone and cable companies to bring you True High-Speed Internet. We're building in your neighborhood now and will soon be ready to connect you.

Currently offering Internet Service in and around the following Iowa communities: Mason City, Hampton, Cartersville, Rockwell, Chapin, and Beed's Lake.



LOCAL SERVICE, LOCAL SUPPORT, UNLIMITED DATA! NO CAPS, NO BUNDLES, AND NO CONTRACTS!

**[CLICK HERE TO CHECK FOR AVAILABILITY
\(HTTPS://ROUTER12.NET/INTERNET-ACCESS/INTERNET-SIGN-UP/\)](https://router12.net/internet-access/internet-sign-up/)**

Residential Fixed Wireless	Price per Month
Lite (5/1.5 Mbps)	\$40
Basic (15/5 Mbps)	\$55
Advanced (25/5 Mbps)	\$85
Extreme (50/10 Mbps)	\$135
Business Fixed Wireless	Price per Month
Lite (10/3 Mbps)	\$45
Basic (30/10 Mbps)	\$85
Advanced (60/15 Mbps)	\$165
Extreme (100/20 Mbps)	\$230
Dedicated 100 (100/100 Mbps)	\$315
Need more? We can do that!	Call for custom pricing
Optional Extras!	Price per Month
4 Port Basic Wireless Router	\$7
1 Static IP Address	\$5

* Installation requires a one time fee starting at \$100, and ranges depending on the circumstances of your home or facility.

6 of 9 Wireless Internet Coverage ☆

Control Number 367228

This map was created by a user. [Learn how to create your own.](#)



Coverage map is an approximate representation of our actual coverage. To determine actual signal levels at your location we may have to perform a free site survey.

[HOME](#)[JOBS](#)[CONTACT US](#)

WildBlue High Speed Internet

What is the WildBlue service and where is it available?

WildBlue is a high-speed satellite internet access service for homes, home offices, and small offices. It is available in virtually every location across the contiguous United States.

Fast. Up to 1.5 Mbps download. That's up to 30 times faster than dial-up.

Always-On. Start surfing instantly. There are no dial-up delays or tying up your phone line. You're always connected so you never have to worry about being "bumped off."

Available. Wildblue reaches virtually everyone, everywhere.

Affordable. Only \$49.95 per month for the Value Pak-close to the cost of a second phone line plus a dial-up account, only faster!

Easy. You can expect a professional installation and friendly 24/7 customer care.

What kind of speed can I expect?

WildBlue offers packages that provide different speed levels. Our core Value Pak offers up to 512 Kbps download speed and up to 128 Kbps upload speed. Our Select Pak features download speeds up to 1.0 Mbps and upload speeds up to 200 Kbps. Our Pro Pak offers download speeds up to 1.5 Mbps and upload speeds up to 256 Kbps.

What is the cost of WildBlue?

	Value Pack	Select Pack	Pro Pack
Price	\$49.95	\$69.95	\$79.95
Download Speed	512Kbs	1.0Mbps	1.5Mbps
Email Addresses	5	5	10
Web Space	10MB	10MB	20MB
Spam & Virus Filtering	Included	Included	Included
Dial-up Access	Optional*	Optional*	Included

* Dial-up access on Value Pak and Select Pak may carry an additional charge for additional e-mail addresses, storage space, and other features

Do I need a southern line of sight to receive a signal from your satellite?

Yes. You will need a clear view of the southern sky to receive a signal from the WildBlue satellite

What equipment is needed to get the WildBlue service?

It's easy. All you need is a WildBlue mini dish and a WildBlue modem.

Do customers I have to have a phone line in addition to the satellite connection?

No. WildBlue offers an efficient 2-way broadband connection that requires no phone lines.

What are my minimum computer system requirements to get WildBlue?

Most computers in use today will meet our minimum system requirements. If you don't know if you meet them, please contact us and we can help you figure it out.

PC/ Windows: 300 MHz or faster processing speed, minimum 128 MB Random Access Memory (RAM), and Windows 98SE, ME, 2000, XP Home or XP Professional operating system. 100 MB of hard drive space and an ethernet card are required.

Macintosh: 300 MHz or faster processing speed, 128MB Random Access Memory (RAM), and OS 10.2 or higher operating system. 100 MB of hard drive space and an ethernet card are required.

[CABLING INSTALLATION SERVICES](#) • [WILDBLUE HIGH SPEED INTERNET](#) • [PRIVATE CABLE TV SYSTEMS](#)

[BUSINESS PRESENTATION](#) [FIBER OPTIC SPLICING & INSTALLATION](#) [SURVEILLANCE/CCTV](#)

all rights reserved Starcom Communications- 2002